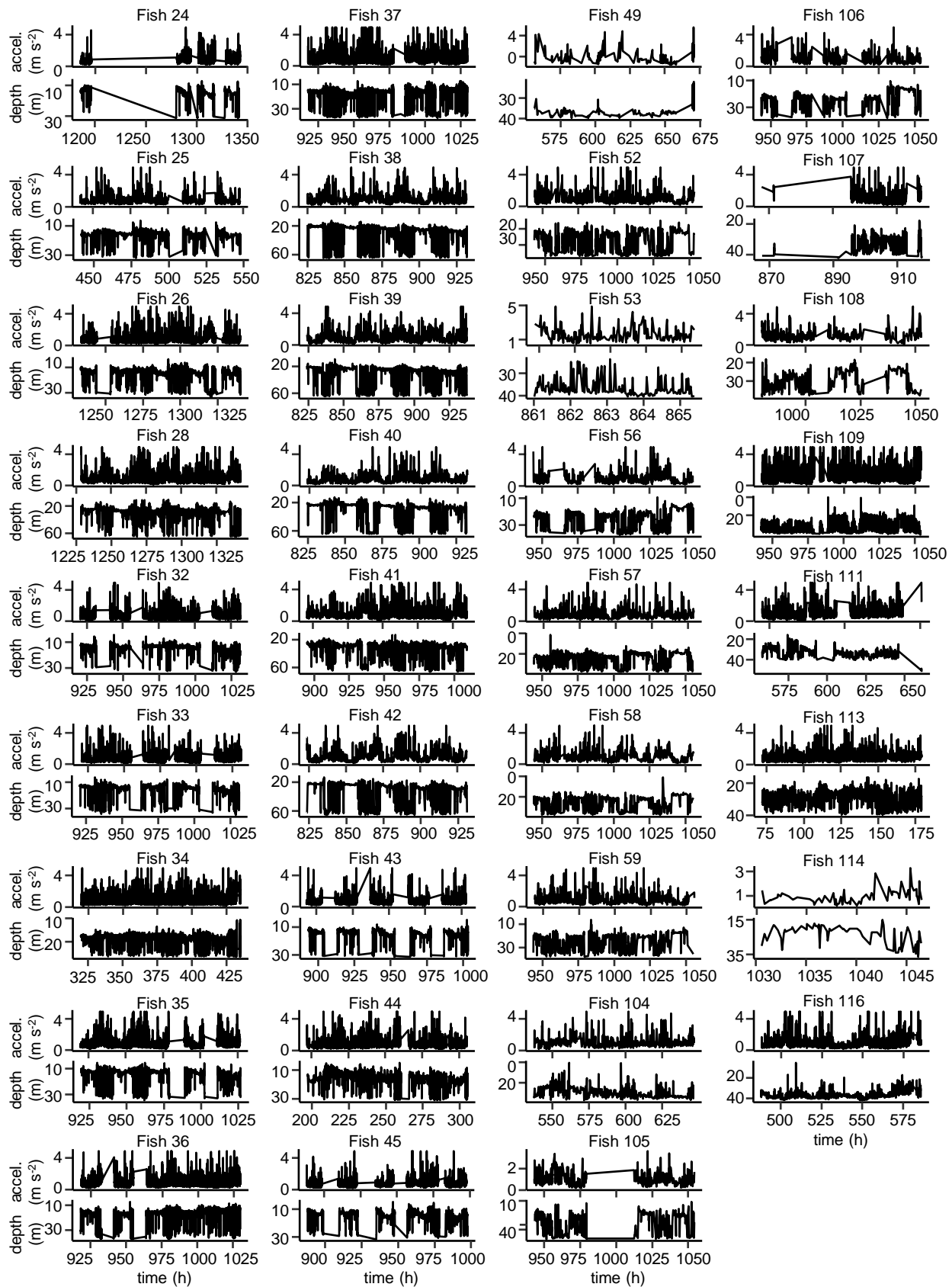


Supplementary Figure 1. Acoustic telemetry profiles of acceleration and depth data from additional fish from 2018 inferred to have lived after release until the end of the tag life, emigration from detection range of the acoustic receiver, or until tag shedding. See Suppl. Table 2 for a rationale and explanation for each fish.



Supplementary Figure 2. Acoustic telemetry profiles of acceleration and depth data from additional fish from 2019 and 2020 inferred to have lived until the end of tag transmission or after release until leaving the acoustic array. See Suppl. Table 2 for a rationale and explanation for each fish.