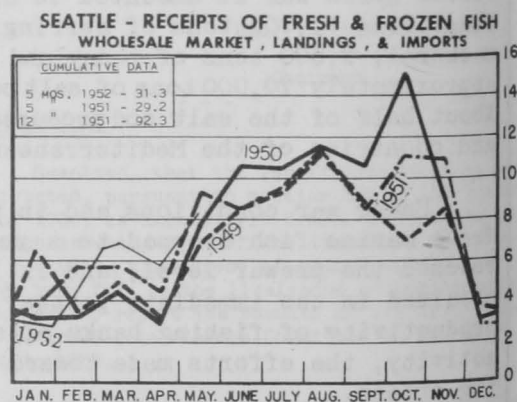
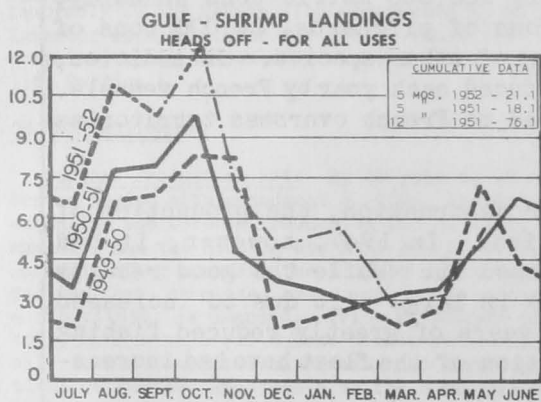
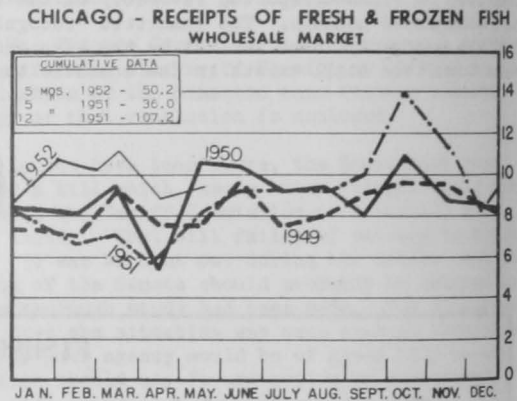
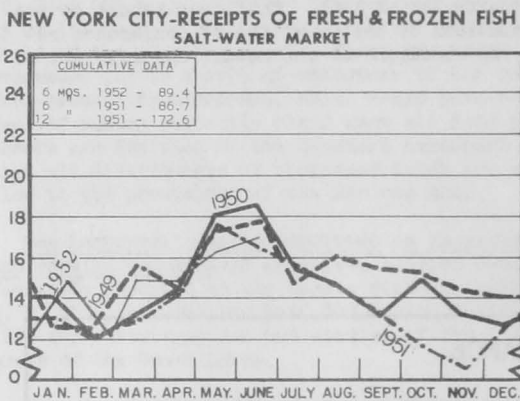
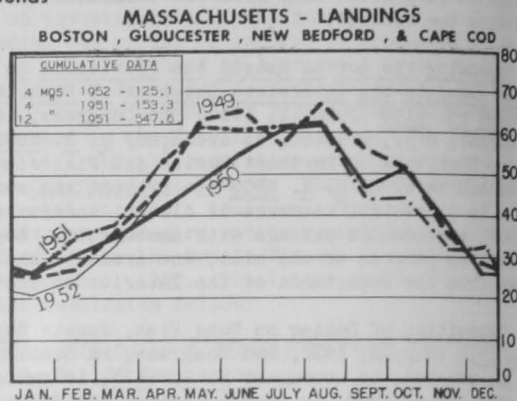
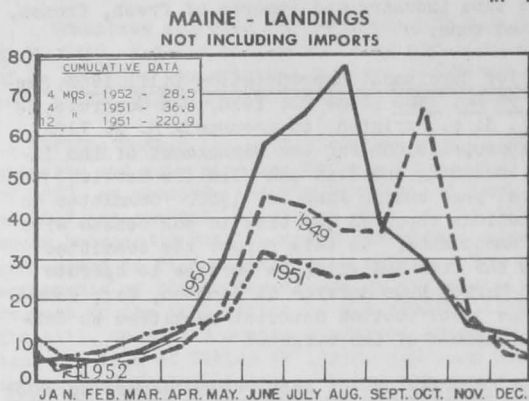
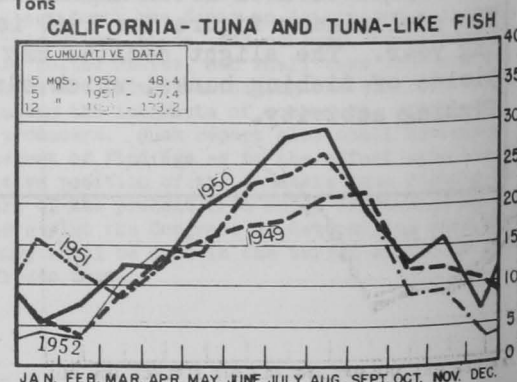
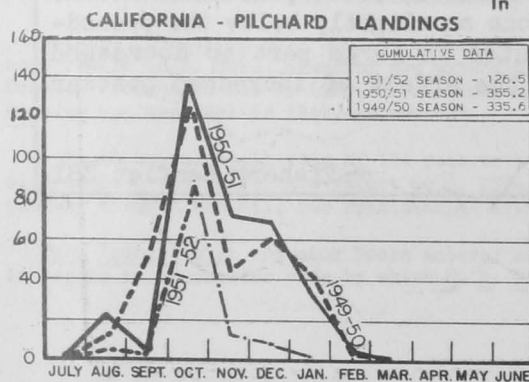


LANDINGS AND RECEIPTS

In Millions of Pounds



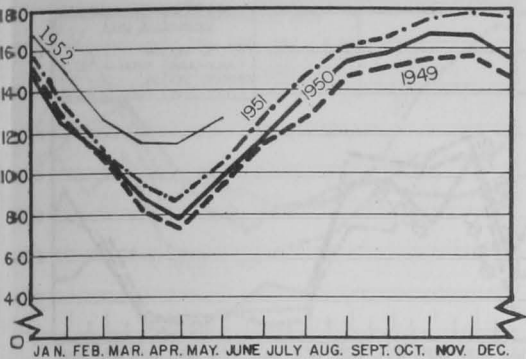
In Thousands of Tons



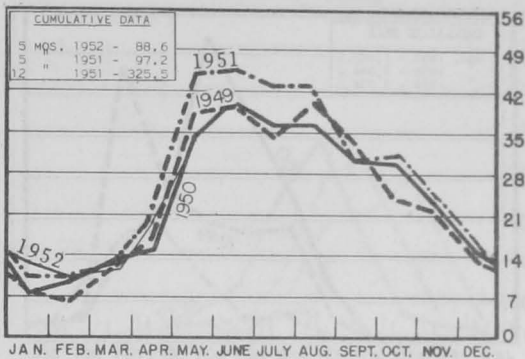
COLD STORAGE HOLDINGS and FREEZINGS of FISHERY PRODUCTS

In Millions of Pounds

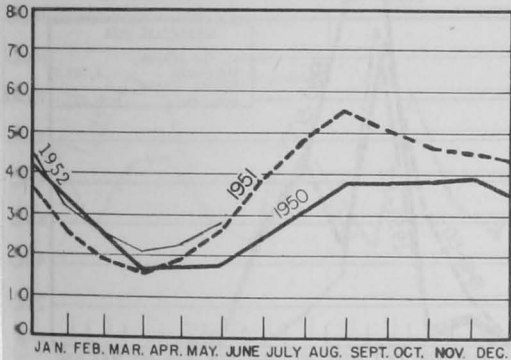
U.S. & ALASKA - HOLDINGS OF FROZEN FISH



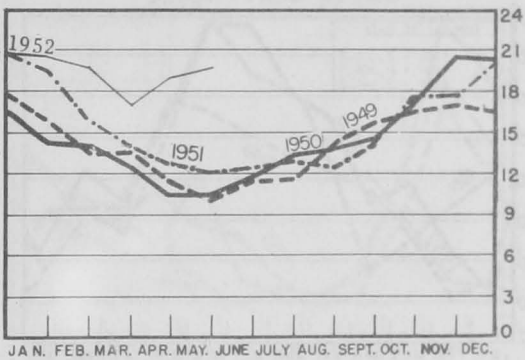
U.S. & ALASKA - FREEZINGS



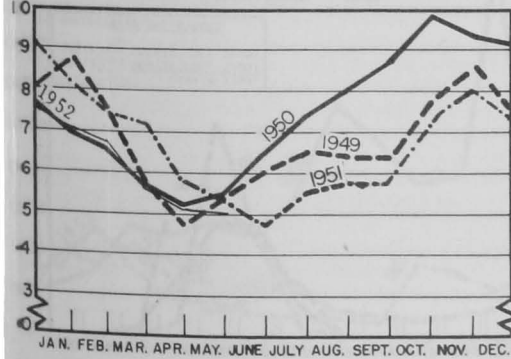
NEW ENGLAND - HOLDINGS OF FROZEN FISH



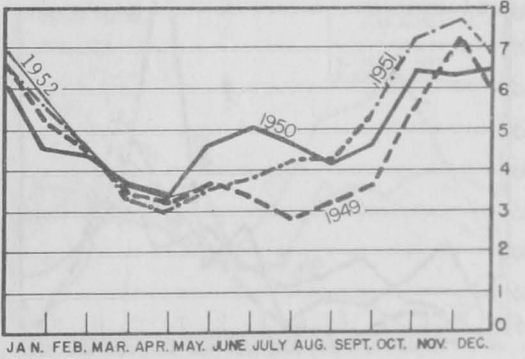
NEW YORK CITY - HOLDINGS OF FROZEN FISH



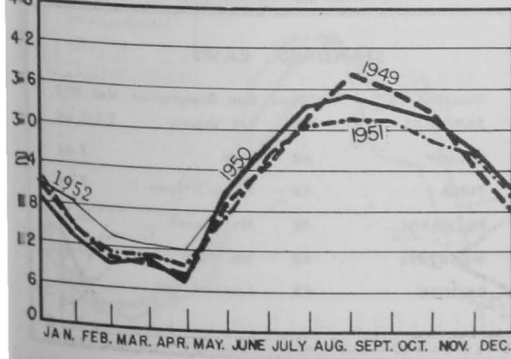
CHICAGO - HOLDINGS OF FROZEN FISH



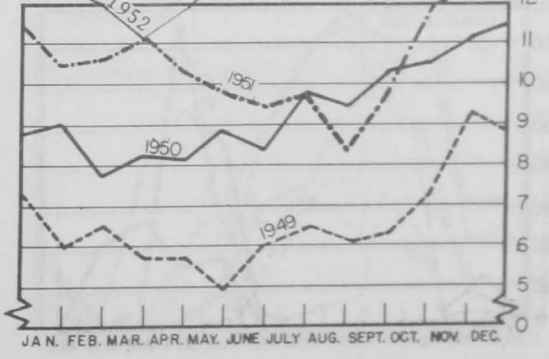
GULF - HOLDINGS OF FROZEN FISH



WASHINGTON, OREGON, AND ALASKA - HOLDINGS OF FROZEN FISH

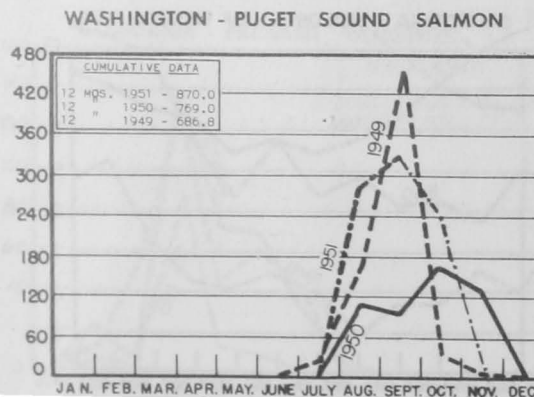
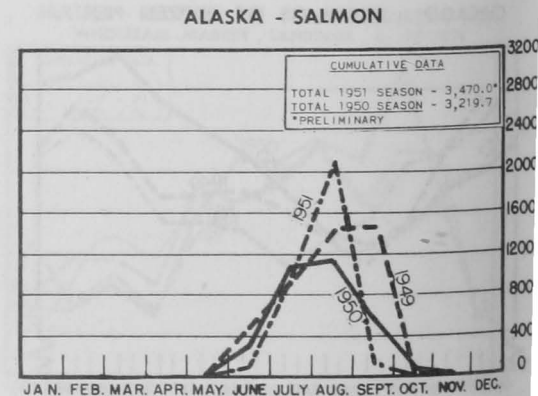
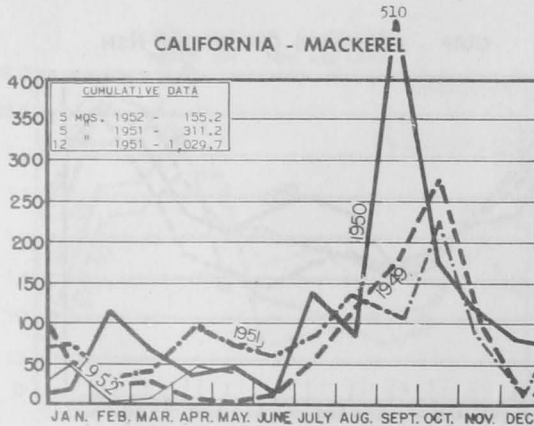
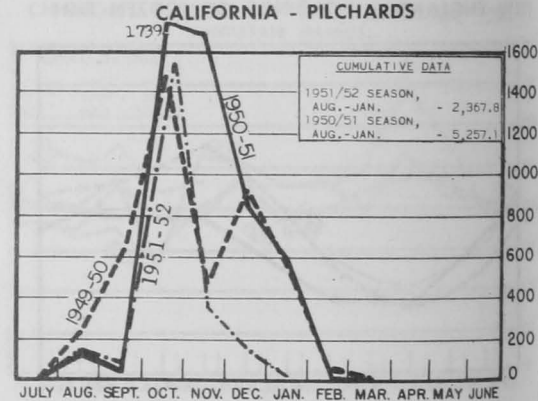
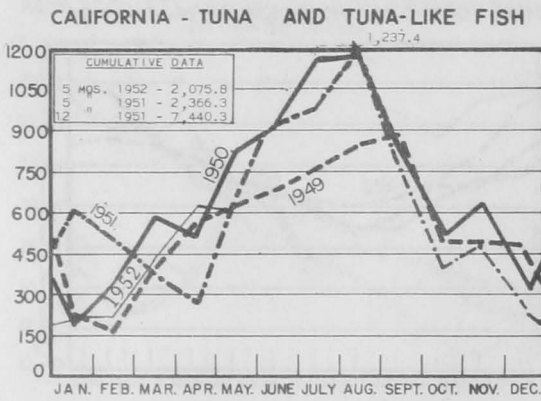
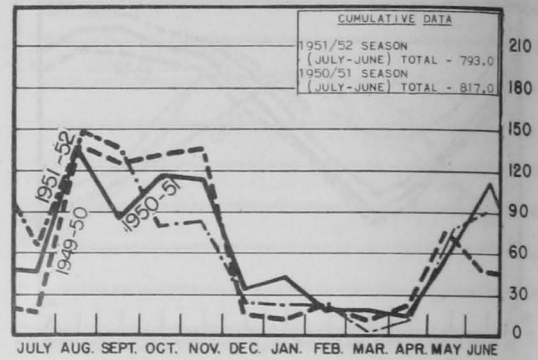
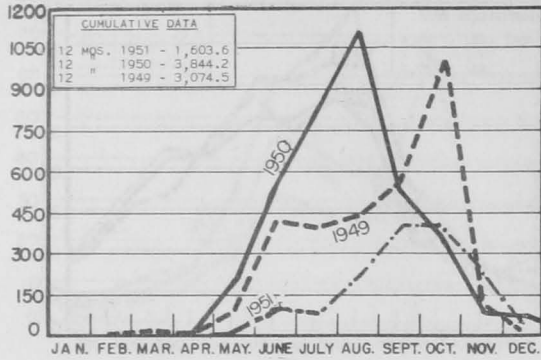


CALIFORNIA - HOLDINGS OF FROZEN FISH



CANNED FISHERY PRODUCTS

In Thousands of Standard Cases

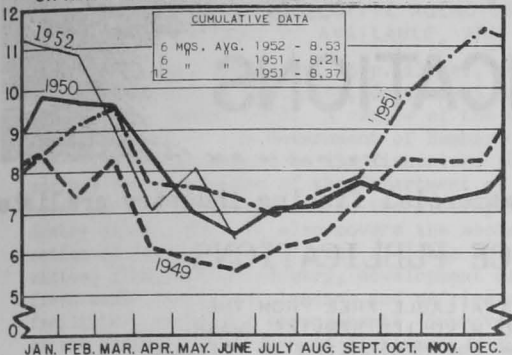


STANDARD CASES

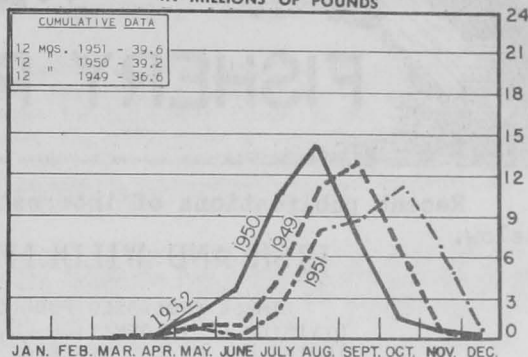
Variety	No. Cans	Can Designation	Net. Wgt.
SARDINES	100	1/4 drawn	3 1/4 oz.
SHRIMP	48	—	7 oz.
TUNA	48	No. 1/2 tuna	7 oz.
PILCHARDS	48	No. 1 oval	15 oz.
MACKEREL	48	No. 300	15 oz.
SALMON	48	1-pound tall	16 oz.

PRICES, IMPORTS and BY-PRODUCTS

BOSTON - WEIGHTED AVERAGE PRICE ON NEW ENGLAND FISH EXCHANGE IN ¢ PER POUND

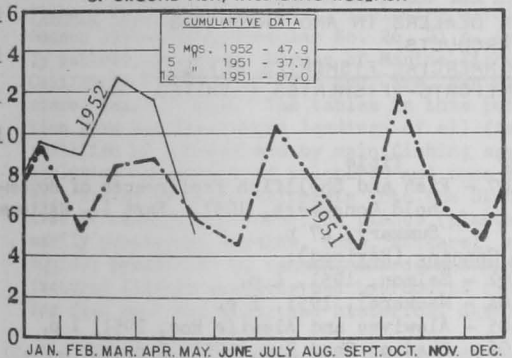


MAINE - IMPORTS OF FRESH SEA HERRING IN MILLIONS OF POUNDS

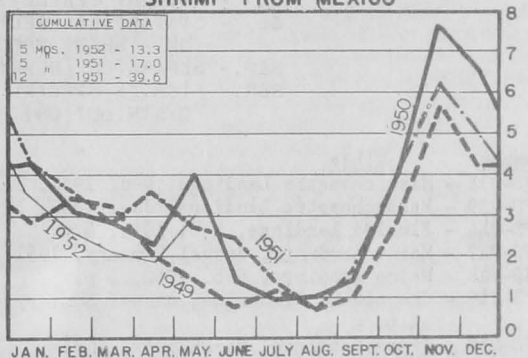


U.S. - IMPORTS OF FRESH & FROZEN FILLETS OF GROUND FISH, INCLUDING ROSEFISH

In Millions of Pounds

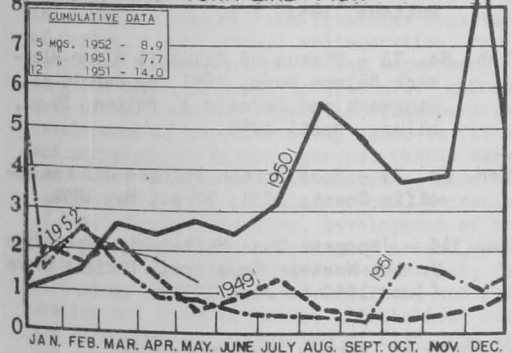


U.S. - IMPORTS OF FRESH AND FROZEN SHRIMP FROM MEXICO

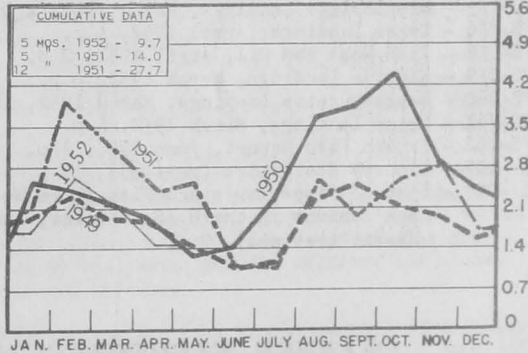


U.S. - IMPORTS OF CANNED TUNA AND TUNA-LIKE FISH

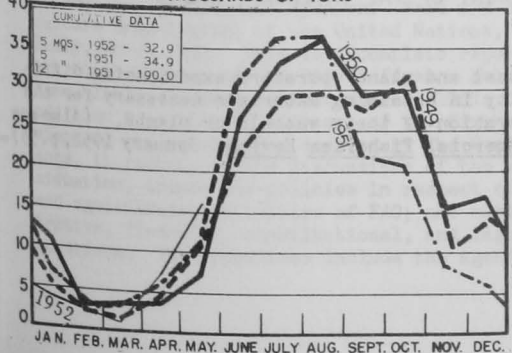
In Millions of Pounds



U.S. - IMPORTS OF CANNED SARDINES (Include in oil and not in oil)



U.S. & ALASKA - PRODUCTION OF FISH MEAL IN THOUSANDS OF TONS



U.S. & ALASKA - PRODUCTION OF FISH OIL IN MILLIONS OF GALLONS

