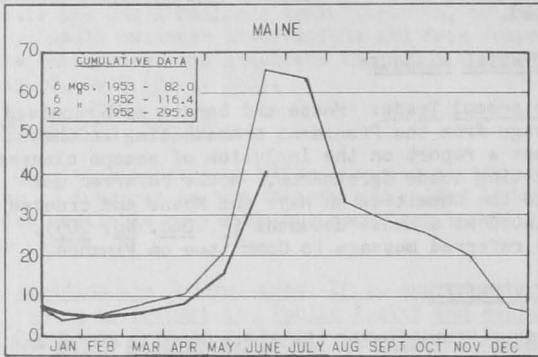
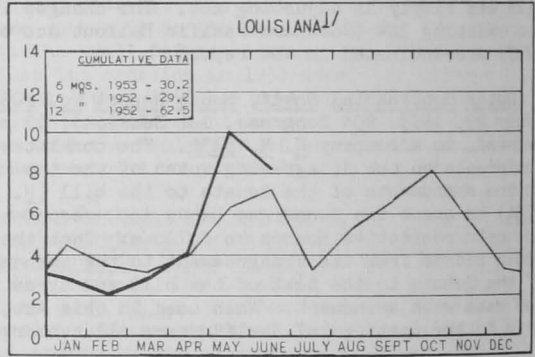
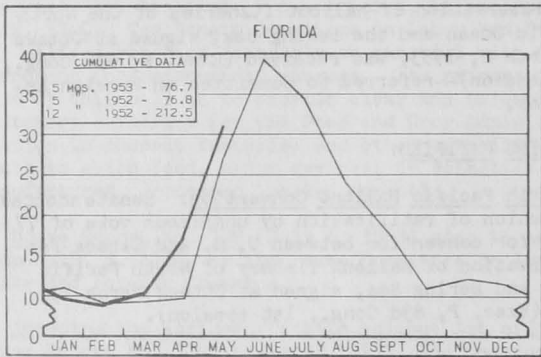
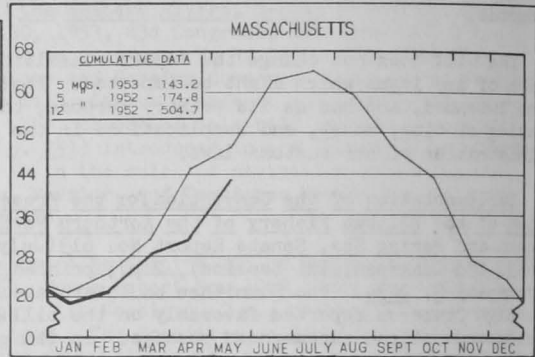




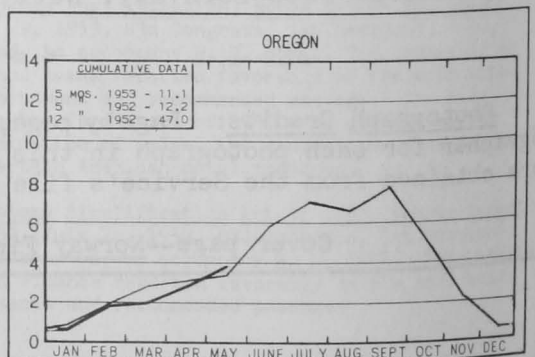
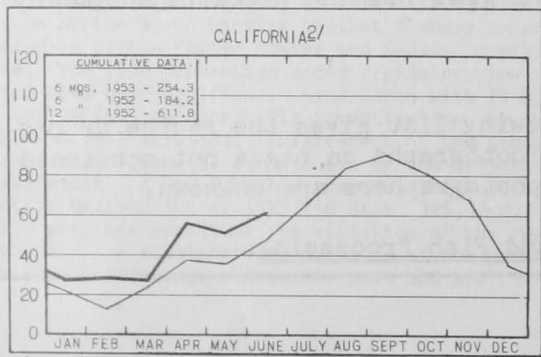
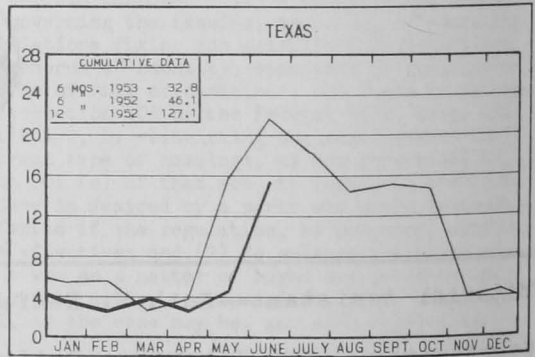
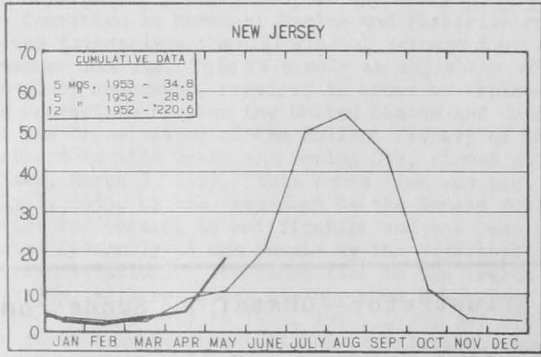
**CHART 1 - FISHERY LANDINGS for SELECTED STATES**  
 In Millions of Pounds



**Legend:**  
 — 1953  
 - - 1952



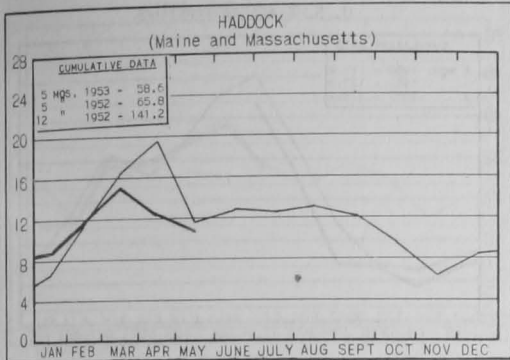
<sup>1/</sup>ONLY PARTIAL--INCLUDES LANDINGS AT PRINCIPAL PORTS.



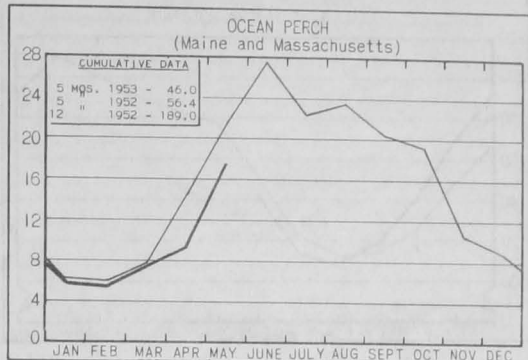
<sup>2/</sup>ONLY PARTIAL--INCLUDES PRODUCTION OF MAJOR FISHERIES AND MARKET FISH LANDINGS AT PRINCIPAL PORTS.

# CHART 2 - LANDINGS for SELECTED FISHERIES

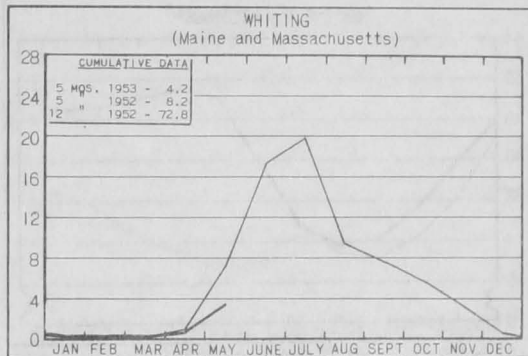
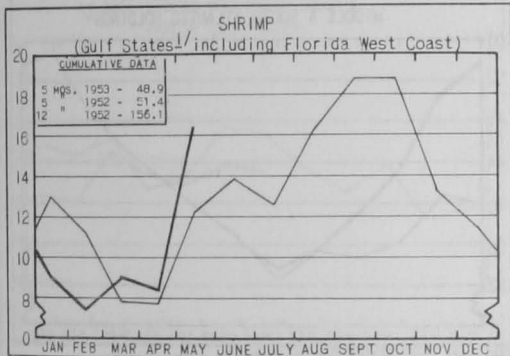
In Millions of Pounds



**Legend**  
— 1953  
- - - 1952

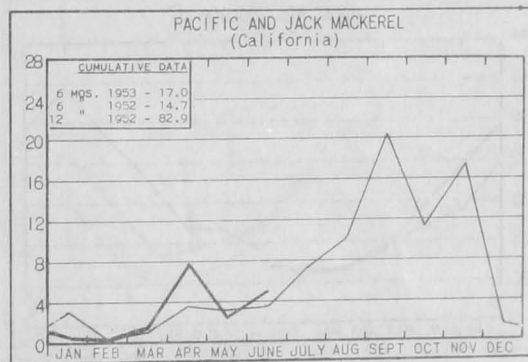
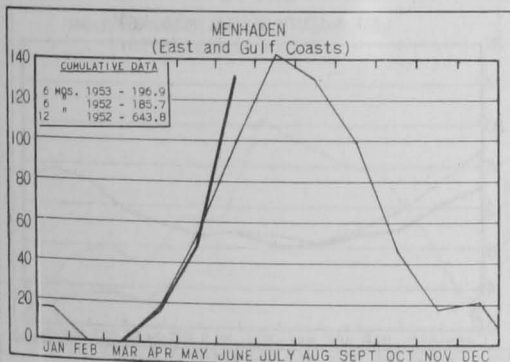


In Millions of Pounds

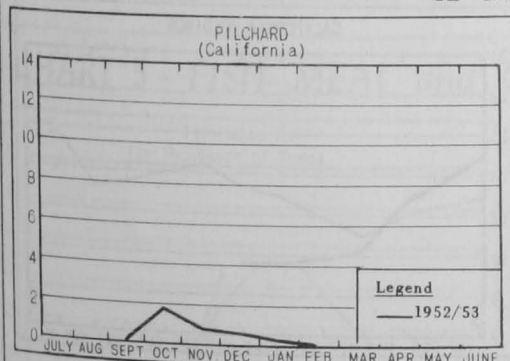


1/4. & ALA. DATA BASED ON LANDINGS AT PRINCIPAL PORTS AND ARE NOT COMPLETE.

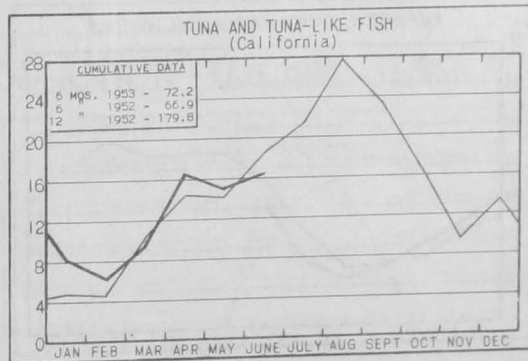
In Thousands of Tons



In Thousands of Tons

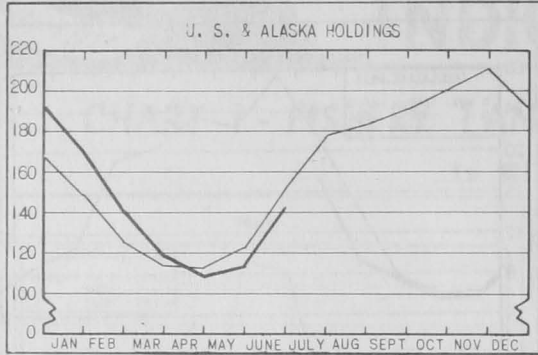


**Legend**  
— 1952/53

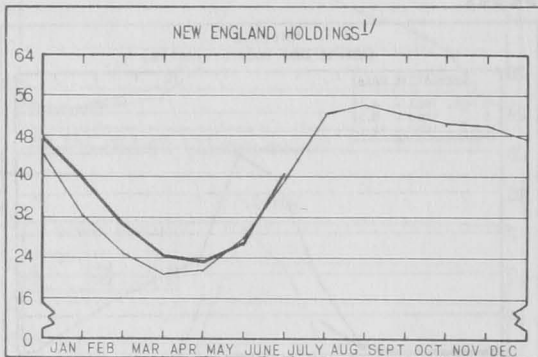
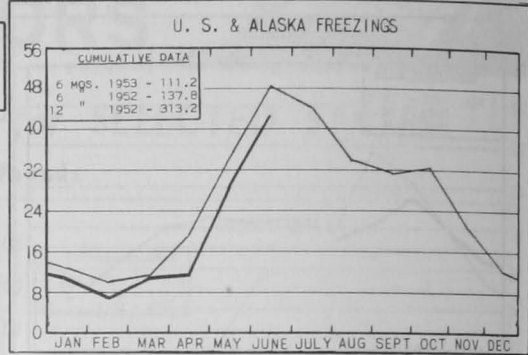


# CHART 3 - COLD-STORAGE HOLDINGS and FREEZINGS of FISHERY PRODUCTS \*

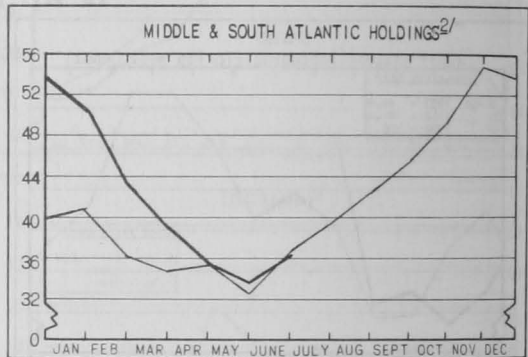
In Millions of Pounds



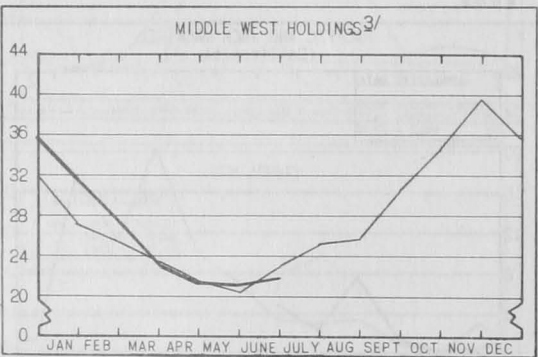
**Legend:**  
— 1953  
— 1952



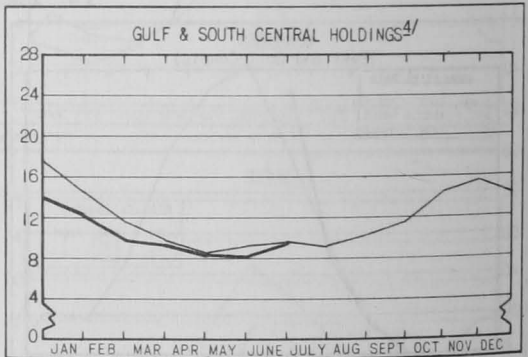
<sup>1/</sup>MAINE, MASSACHUSETTS, RHODE ISLAND, AND CONNECTICUT.



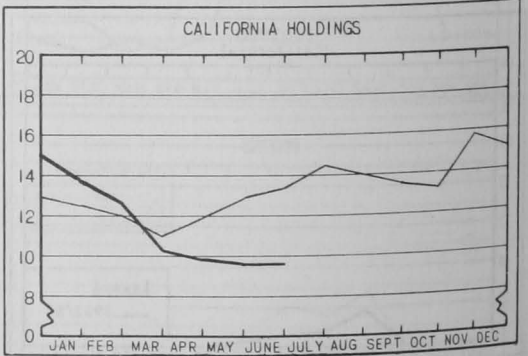
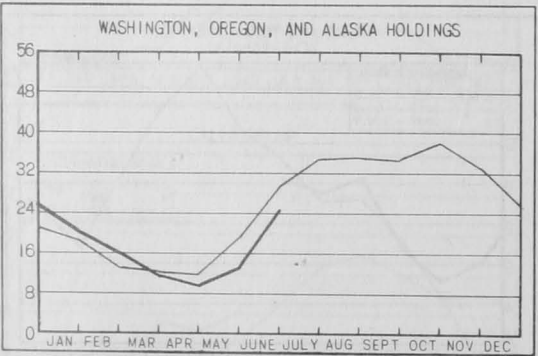
<sup>2/</sup>ALL EAST COAST STATES FROM N. Y. SOUTH.



<sup>3/</sup>OHIO, IND., ILL., MICH., WIS., MINN., IOWA, MO., N. DAK., NEBR., & KANS.



<sup>4/</sup>ALA., MISS., LA., TEX., ARK., KY., & TENN.

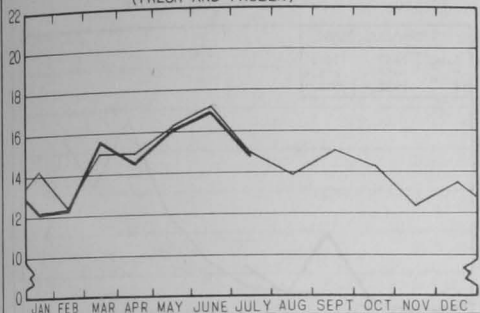


\*Excludes salted, cured, and smoked products.

# CHART 4 - RECEIPTS and COLD-STORAGE HOLDINGS of FISHERY PRODUCTS at PRINCIPAL DISTRIBUTION CENTERS

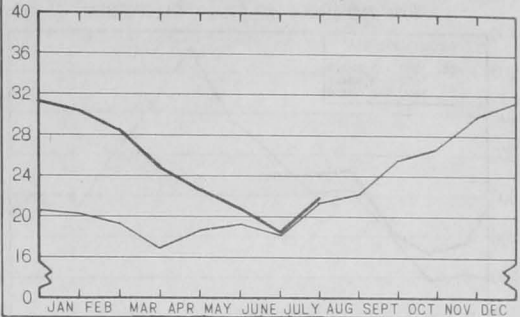
In Millions of Pound

RECEIPTS<sup>1/</sup> AT WHOLESALE SALT-WATER MARKET (FRESH AND FROZEN)



**NEW YORK CITY**

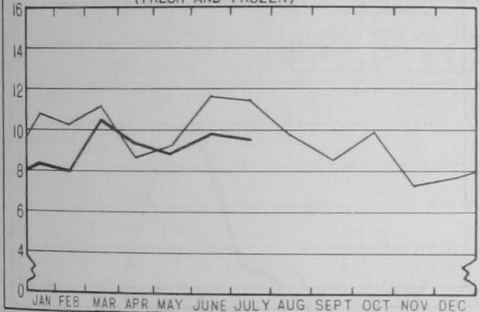
COLD-STORAGE HOLDINGS<sup>2/</sup>



<sup>1/</sup>INCLUDE TRUCK AND RAIL IMPORTS FROM CANADA AND DIRECT VESSEL LANDINGS AT NEW YORK CITY.

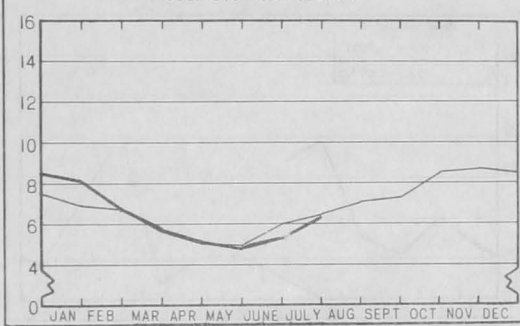
<sup>2/</sup>AS REPORTED BY PLANTS IN METROPOLITAN AREA.

RECEIPTS AT WHOLESALE MARKET (FRESH AND FROZEN)



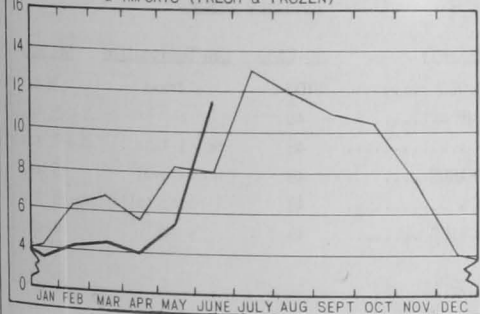
**CHICAGO**

COLD-STORAGE HOLDINGS



**SEATTLE**

WHOLESALE MARKET RECEIPTS, LANDINGS, & IMPORTS (FRESH & FROZEN)

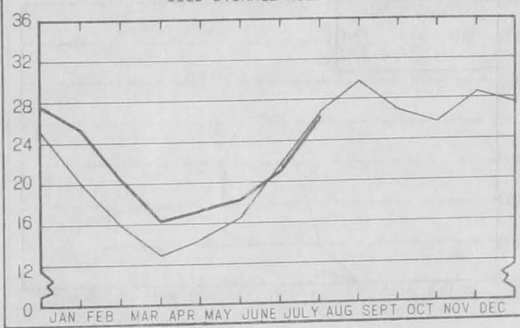


Legend

- 1953
- 1952

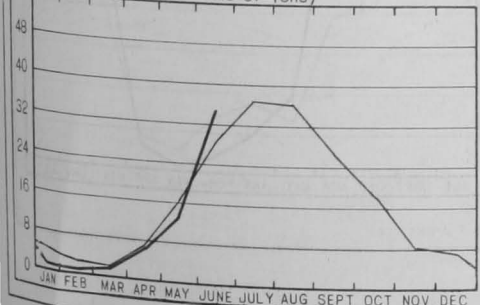
**BOSTON**

COLD-STORAGE HOLDINGS

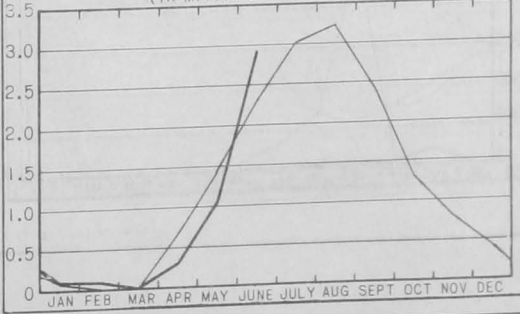


# CHART 5 - FISH MEAL and OIL PRODUCTION - U.S. and ALASKA

FISH MEAL (In Thousands of Tons)

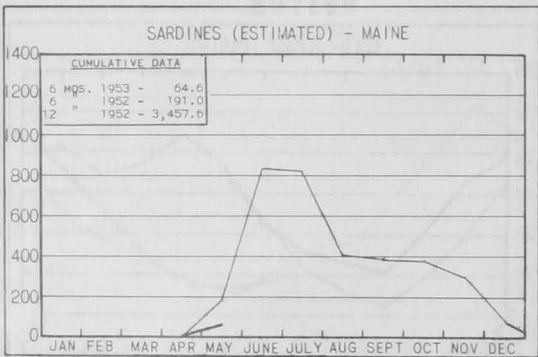
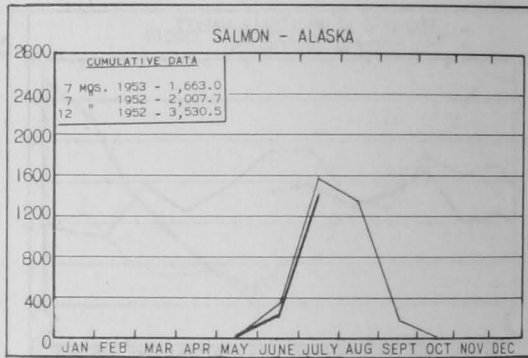
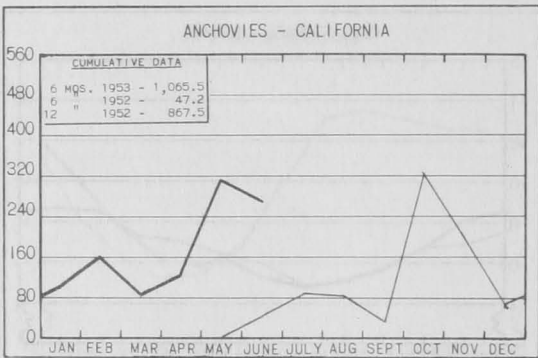
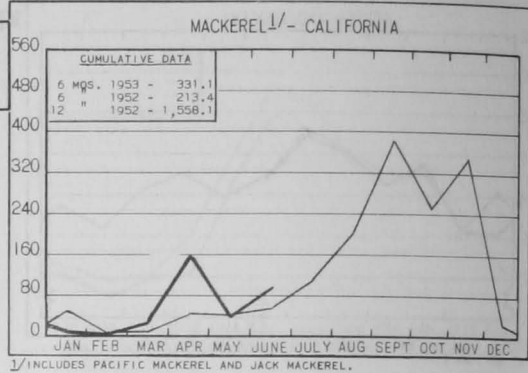
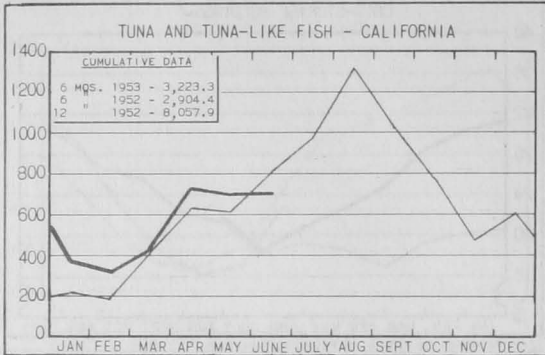


FISH OIL (In Millions of Gallons)



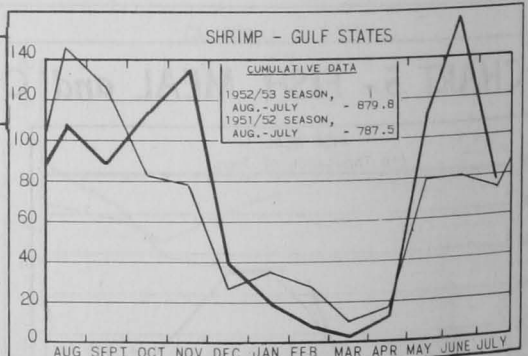
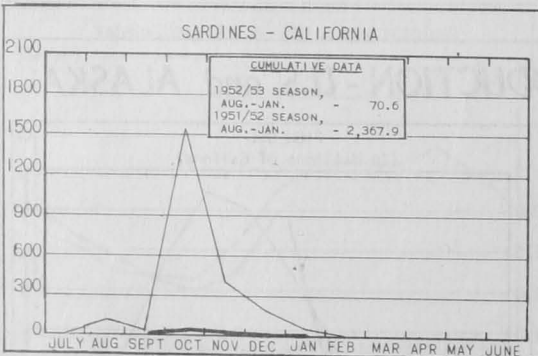
# CHART 5 - CANNED PACKS of SELECTED FISHERY PRODUCTS

In Thousands of Standard Cases



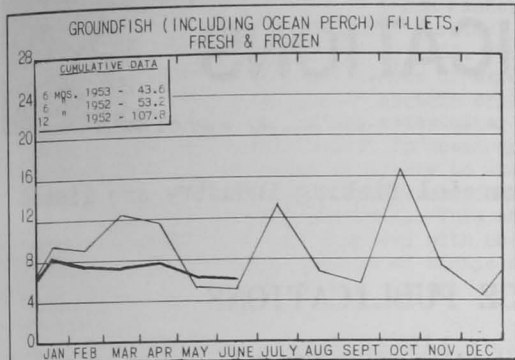
**STANDARD CASES**

Variety	No. Cans	Can Designation	Net Wgt.
SARDINES	100	1/2 drawn	3 1/2 oz.
SHRIMP	48	—	5 oz.
TUNA	48	No. 1/2 tuna	6 & 7 oz.
PILCHARDS	48	No. 1 oval	15 oz.
SALMON	48	1-pound tall	16 oz.
ANCHOVIES	48	1/2 lb.	8 oz.



# CHART 6 - U.S. FISHERY PRODUCTS IMPORTS

In Millions of Pounds



**Legend:**  
 — 1953  
 — 1952

